

## Cover plates

The cover plates are used for pneumatic doctor blade holders with CLOUTH base troughs for replacement, modification, optimisation or also as individual components.

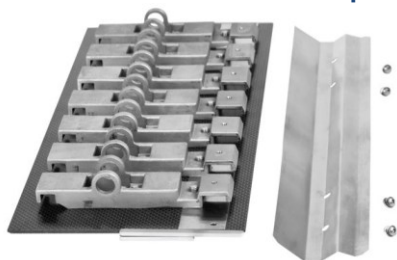
Take these precautionary measures to prevent injuries.



### Safety instructions

- Only have the cover plates replaced by specialist and trained personnel when the machine is stopped.
- Safeguard the machine to prevent it being switched on without authorisation and started up inadvertently.

### CLOUTH-CONTOUR® cover plate



#### Version, technical data

- Special carbon fibre design
- Cover plate thickness of 3 mm (optional 4 mm)
- Temperature-stable up to 185°C
- High chemical resistance
- Available in individual lengths and widths
- Tolerance:  $\pm 1\text{mm/m}$  at max. 12000mm

Suitable for replacement, modification or optimisation for all common pneumatic doctor blade holders.

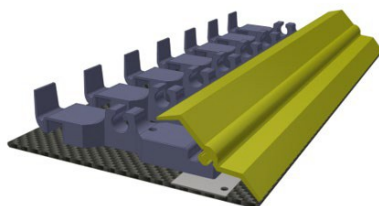
### CLOUTH-CONTOUR LIGHT® cover plate



### CLOUTH® HS-1 cover plate



### CLOUTH® TOPSLIDE cover plate





## Cover plates

### Proper use

The cover plates are used for pneumatic doctor blade holders with CLOUTH base troughs for replacement, modification or optimisation.

The cover plate is connected to the base trough using a swivel bearing. The cover plate includes doctor blade retaining fingers that hold a doctor blade.

The pressure hose is located in the space between the cover plate and the base trough. When the pressure hose is charged with compressed air, the cover plate pivots and the doctor blade is applied to the roller body in a linear manner.

Even with cambered roller surfaces, the flexible cover plate results in a uniform contact pressure of the doctor blade across the whole roller width.

These doctor blade holders are used in the paper and steel industry to doctor the roller or cylinder surface.

### Foreseeable misuse

- The cover plates may only be used in accordance with their proper use.
- Operation without or with insufficient protective equipment.

### Delivery, storage and transport

- Check the delivery for completeness and external integrity using the delivery note.
- In the event of transport damage, contact us immediately.
- In order to ensure the longest possible service life and therefore to ensure that the cover plate can be used for a long time, proper storage and handling is extremely important. Cover plates should therefore be stored flat without tension, not bent or pressed down on.
- Protect the cover plates from external force (knocks, impacts) during transport.

### Installation

The cover plates must be installed by people who have been explicitly commissioned to do so, are authorised and have received the corresponding training/instruction. The operating company is responsible for defining how much support is required from the manufacturer during installation.

In order to ensure that the cover plates function and to prevent their service life also being reduced by mechanical stress, observe the following:

- Do not use the cover plate if there is visible damage.
- Clean the entire doctor blade holder.  
Loosen just one screw from the base trough in order to pull the cover plate out for inspection and cleaning purposes or to replace the swivel bearing (centre rod) on the doctor blade holder.
- Carry, hold, put down and install the cover plate together with several other people.
- Inspect the removable connections to ensure that they are tight before starting up

### Maintenance and cleaning

Inspecting the cover plates on a regular basis is very important for optimum doctoring, as brittle or damaged cover plates prevent the doctor blade being applied to the roller body in a linear manner.

- Cover plates must be inspected 1x per year after installation when the machine is stopped. Higher mechanical loads require shorter inspection periods. The result of the inspection must be documented. Check all connections and screw connections regularly for clearly visible damage. Have all damage repaired by authorised maintenance staff immediately!
- Depressurise the system sections and pressure lines before starting the maintenance and cleaning work.



## Cover plates

### Spare parts

Spare parts must fulfil the technical requirements defined by the manufacturer. This is always the case when original spare parts are used. In order for us to process your service queries quickly, please have the exact designation and the corresponding serial number to hand.

### Environmental protection

The packaging materials are recyclable. Please dispose of the device in accordance with local laws/regulations.

### Disposal

Cover plates that can no longer be used must be disposed of properly in accordance with local regulations/laws.